



# TITAN

Equipment Monitoring System

- ▶ **Eliminate equipment theft**
- ▶ **Maximize equipment utilization**
- ▶ **Slash maintenance costs**
- ▶ **Boost revenue**
- ▶ **Curb insurance costs**
- ▶ **Minimize fleet and administrative costs**



Built specifically for the demanding environment of the construction industry, the TITAN remotely collects data and transforms it into actionable information for intelligent business decisions.

For the equipment owner, the TITAN is the complete tool to increase asset profitability and productivity while decreasing the costs and risk of theft.

The TITAN puts you in control of your equipment anytime, anywhere.



**When you invest in technology, you are selecting the company behind the system as much as the product itself. As a manufacturer with a 34-year history of innovation, we have the successful track record and vision to deliver a solution that not only enhances your business now, but is secure well into the future.**

## FEATURE SET

- GPS on demand and at scheduled intervals
- Hour meter reporting
- Machine remote disable/enable
- Real time updates w/ ignition on/off status
- Machine daily run time log
- Utilization reports
- Upcoming maintenance reports
- Service due notifications
- Machine inactivity notification
- 5 user defined inputs for sensor alarming
- Load counting
- Idle vs. run time reporting
- Low battery notification
- Remote start/auto start
- Backup battery option
- External temperature sensing
- CAN Bus
- "Heartbeat" confirms unit is functioning properly

- Future proof digital wireless communication
- 2-year replacement warranty
- Flat rate subscription with no overage or hidden fees
- No long term contract, pure month to month agreement

## INDUSTRY LEADING THEFT PROTECTION TECHNOLOGY

The TITAN ensures your valuable equipment is always safe, and should a theft attempt or unauthorized use occur, the system calls you immediately to report the suspicious activity. If your machine goes on the move, then GPS puts it a click away on your computer.

The TITAN has a 100% success rate in protecting equipment, by either recovering the stolen assets or preventing the theft outright. Keep your insurance rates under control, curb unnecessary downtime and maintain peace of mind with the TITAN as your around-the-clock watchdog on your equipment.

### ANTI-THEFT FEATURES:



- Remote machine disable on demand
- Locate equipment on demand anytime for recovery
- 24/7 transit notifications when the asset moves above 30 MPH
- Homing beacon mode (panic mode), leaves a bread crumb trail to follow
- Geofence, sends alarm when the asset moves outside of invisible boundaries

### NIGHTLY CURFEW, AUTOMATICALLY SETS AT THE END OF THE WORKDAY

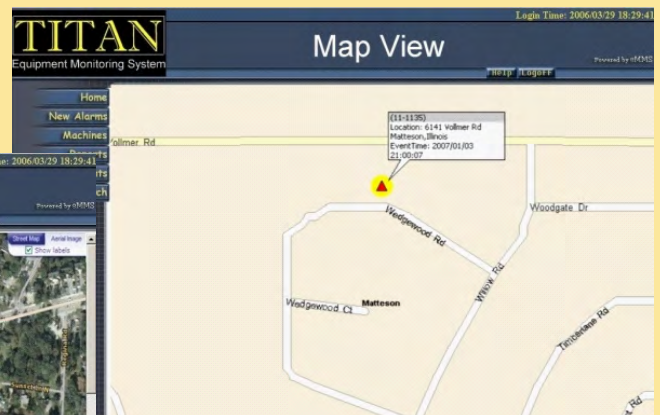


- Start attempt alarm
- Movement alarm (geofence)
- Automatic starter disable
- Curfew may be turned off remotely via secure login to software

### ANTI-TAMPER FEATURES:



- Installation is completely covert (no exposed antenna) on 95% of machine models
- Unauthorized removal or disconnection of the unit immediately locks the starter
- Backup battery keeps the unit reporting if power is lost or cut



*Utilize both the standard map and satellite view to locate your equipment, especially when it is off the beaten path*

## IMPROVE SERVICE MANAGEMENT AND DECREASE REPAIR COSTS

Asset ID	Name	Description	Hours Until Service	Current Location
056-047-04-010	CASE 580SM 1	Loader BH 1	4.23	Newton,NC-1616 US-321 Bus
087-031-04-002	CASE CX700B 3	Excavator 3	38.75	Mt Holly,NC-128 Victoria Dr
091-022-01-012	CASE 465 6	Skid Loader 6	66.48	NC-Appalachian Moutains, Linc
087-014-06-003	CASE 580SM 3	Loader BH 3	79.22	Mooresville,NC-127 Bandit Ln

*The fleet scheduling report clearly identifies which assets are coming due for service and where they are located for faster, more efficient service attention*

Keep your equipment serviced on time, every time by automating the scheduling and reporting of data:

- Receive reports of where each asset stands in the service cycle with up to the minute usage data
- Track multiple service counters on the same asset, such as attachments or individual drums on a crane
- Reduce repair and downtime costs with real time notifications that inform you if a service is missed, as well as when a threatening condition arises on the machine
- Improve efficiency by using real time location data to route drivers and bundle multiple service calls into one trip

## INCREASE REVENUE AND REDUCE ADMINISTRATIVE COSTS

Event Time(local)	Street Name	City/State	Reason	Idle Time	Roll Time	Off Time
3/14/2009 15:06	20068 Highway 190E	Hammond,LA	Ignition On	0:00:24	0:02:00	0:00:00
3/14/2009 9:59	4655 Frog's Leap Ln	Hammond,LA	Ignition Off	0:00:00	0:00:00	1:18:34
3/14/2009 8:33	4655 Frog's Leap Ln	Hammond,LA	Ignition Off	0:00:26	0:00:48	0:00:00
3/14/2009 8:32	4658 Frog's Leap Ln	Hammond,LA	Ignition Off	0:00:00	0:00:00	3:38:44

*The daily start-stop report logs where your equipment was and what it was doing (idling, off or running) all day long*

Automated, real time reporting details where, how and when your equipment is working every day:

- Improve billing with time stamped usage data of location and status (on, off or idling) delivered in real time as it occurs
- Run historical reports on your archived activity data
- Eliminate manual data collection and entry, as well as human errors
- Verify time cards and eliminate hoarding practices with actual run time hours and daily start/stop time identification

## MANAGE YOUR FLEET MORE EFFICIENTLY AND EFFECTIVELY

Asset ID	Name	Description	Run Time	Roll Time	Idle Time	Loads	Current Location
1508	CASE 335B 2	Offroad Dump 2	34.35	21.05	13.3	2	SC-Beaufort
1509	CASE 335B 1	Offroad Dump 1	77.58	48.42	28.8	122	SC-Beaufort
1556	CASE 340B 1	Offroad Dump 6	329.45	65.28	264.17	521	GA-Chatham
1772	CASE 335B 3	Offroad Dump 3	19.42	14.5	4.92	29	SC-Beaufort

*The fleet utilization report provides a side-by-side analysis of usage, productivity and loads over a customer defined period of time*

Analyze your fleet's activity for more informed, intelligent business decisions:

- Identify underutilized assets for redistribution or liquidation
- Compare productivity between operators and asset types
- Utilize powerful reports for informed asset purchasing, rent vs. buy, job costing and estimating decisions
- Decrease fuel costs and unnecessary wear by identifying and curbing excessive idling

TO LEARN MORE CALL 316-943-2515  
or visit [burlingtoninstallation.com](http://burlingtoninstallation.com)  
and [dplamerica.com](http://dplamerica.com)

## HIGHEST QUALITY DESIGN AND MANUFACTURE

Nine years after introduction, the TITAN continues to operate and excel in the harshest working environments across North America. Its rugged design is field proven and carries an industry leading 2 year-full replacement warranty .

- Rugged, sealed cast aluminum waterproof enclosure
- Integrated mounting flanges with vibration grommets
- Humidity, shock and vibration resistant to SAE J1455 standards
- Sealed in cab antenna for covert installation
- ISO 9001:2000 certified manufacture in North America
- 8-40 VDC Input voltage, with backup battery option
- Worldwide GSM/GPRS digital communications
- CAN Bus with 5 additional user defined sensor inputs
- External temperature sensor
- Data integration and compatibility with back-office systems

## COMPANY LONGEVITY

Since 1974, companies like Michelin Tires, McCain Foods, the Los Angeles Police Department and the United States Federal Bureau of Investigation (FBI) have trusted us to deliver powerful solutions for their unique needs.

Highly flexible in our activities and always on the edge of new technologies and developments, we use our strong technical background and innovative research and development to maintain a reputation as a leader and solution provider. Using our extensive knowledge of technology, we construct our products in accordance with the most intricate design specifications and customer feedback.

DPL's partners and clients range from True Value's cooperative of 1,100 stores to single location outfits, national contractors to three machine companies. From authorized dealers to single store equipment dealerships.

No matter how big or small your operation is, we've got it covered.

## PRODUCT RELIABILITY AND SUPPORT

As the original manufacturer of the TITAN, our goal is to deliver to you the most reliable product with unsurpassed after sale support. Every unit is built in our ISO 9001:2000 certified facility in North America, and individually tested for quality assurance before shipping. Our Operations Center features data backup and full redundancy with support available around-the-clock.

*The Gold Standard of Quality, why ISO 9001:2000 certified manufacturing is important to you:*

ISO 9001:2000 registration is another tangible symbol of our commitment to customer-driven quality results. The 2000 standard includes new requirements, feedback loops and management accountability to consistently deliver the most dependable product possible. In short, the certification guarantees you receive the most reliable product of superior quality.

Because that is our commitment:

A commitment to create world-class solutions.

A commitment to deliver first-rate service.

A commitment to quality.

Our commitment to you.

To learn more about protecting and managing your assets with our award winning technology call **316-943-2515** or visit [www.burlingtoninstallation.com](http://www.burlingtoninstallation.com) and [www.dplamerica.com](http://www.dplamerica.com)



Exclusive  
Distributor  
for CASE CE

